

High Voltage Junction Box(Semiconductor Relay Type)

- According to BEV and rapid charging with high outputs, reduce the size and height by using semiconductors
- Rapid disconnection in case of abnormality by semiconductor FUSE

High output products are required in charging specification to reduce charging times as one of the challenges for BEVs/PHEVs.



Feature

1

Reduce the size and height by semiconductor relay

2

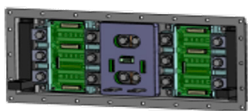
Semiconductor FUSE function

Performance/Specification

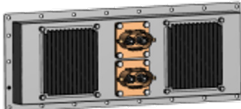
Target Specification

Max. Voltage	1000V
Max. Current	Continuous 200A(Air cooling: Developed sample items)
	Continuous 500A(Water cooling: In-developing)
	Implement semiconductor FUSE function
	Built-in voltage/ current sensor

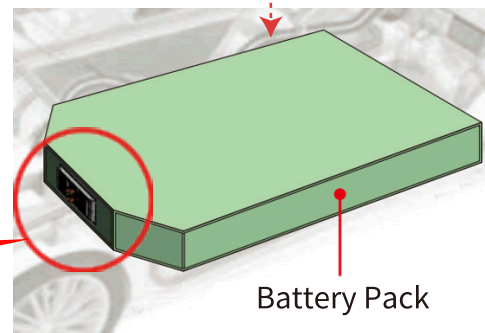
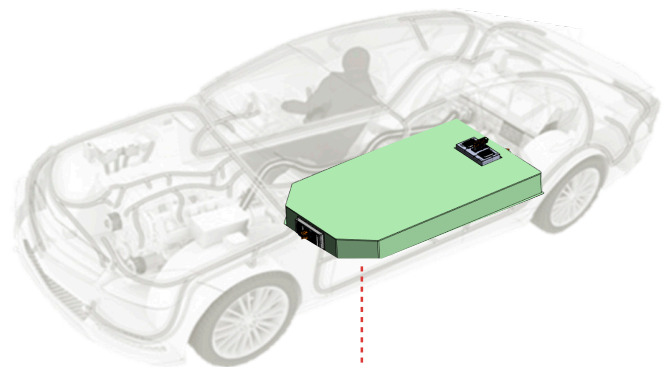
High Voltage Junction Box (Power supply / distribution)



Semiconductor Relay Module



Heatsink



Battery Pack