

What?

What does Yazaki aim to achieve?

The automotive industry is undergoing an unprecedented era of transformation. It will no longer be possible to meet the evolving needs of the world using conventional ideas and approaches. By combining industry-leading technologies in Monozukuri with Kotozukuri leveraging AI and digital technologies, we are taking on the challenge of developing a wide range of products and services that will spread safe, secure and comfortable mobility and support the optimum supply of energy. Yazaki continually reexamines whether its current activities are appropriate from the perspective of society, tackling sustainability while always questioning itself.

Toward the Widespread Adoption of Safe, Secure and Comfortable Mobility

Example HMI Products

Contributing to safe and comfortable transportation by preventing distracted or inattentive driving and providing appropriate information to passengers



Example TRUE SAFE

An AI and digital technology solution that supports safe driving based on the data obtained from digital tachographs



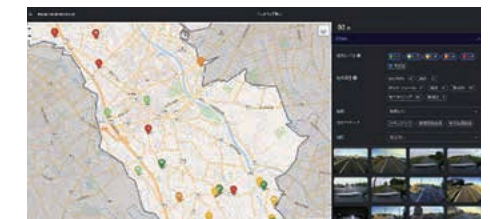
Example ESTRA-Web2

A operation management system that manages the data obtained from a drive recorder-integrated digital tachograph in the cloud, contributing to improved commercial driver management, safety and work efficiency for customers



Example Comprehensive Road Management System

Contributing to the streamlining of road maintenance and management services by automatically detecting damage to road surfacing based on data from digital tachographs and drive recorders



Industry-leading
technologies in
Monozukuri

Kotozukuri
leveraging
AI and digital
technologies

Supporting the Optimal Supply of Energy

Example

Gas-related equipment that contributes to streamlined operations in the gas industry and the safe and reliable supply of gas through the manufacturing and sale of communication devices and the operation of central monitoring centers



Example

Air conditioning equipment that combines AI with remote control technologies to ensure the optimum use of renewable energies and contributes to sustainable agriculture with minimal staffing

