

# Modular Connector

Under development

Scheduled to be installed after 2028

Modular connector with flexible changes in circuit configuration and layout  
Gear-type lever enables low-insertion-force mating even with multiple poles

## Background or Assignment

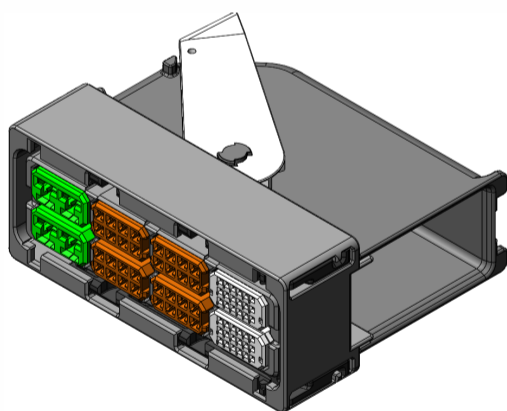
Need to develop connectors in a short term to meet various circuit requirements. In addition, a structure that enables easy mating of connectors even with multiple poles is required.

## Solutions to Challenges

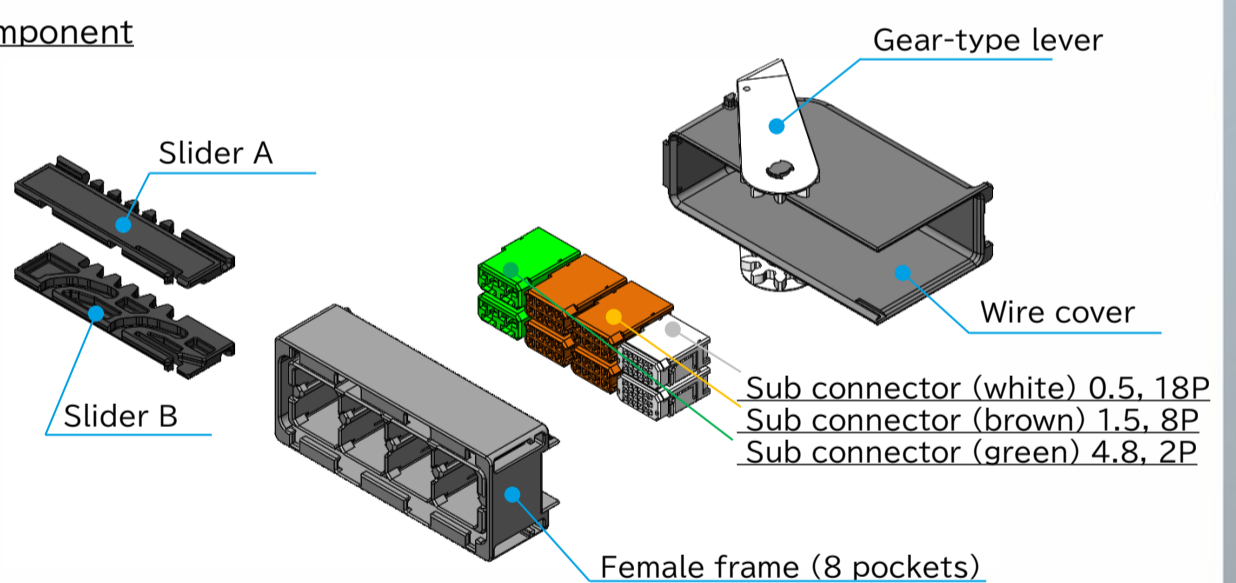
- 1 Layouts can be flexibly changed according to vehicle circuit specifications
- 2 Low insertion force using gear-type lever
- 3 Cost reduction through W/H automated production

## Main performance, specifications, and structure

### Product appearance



### Component



### Flexible layout change

Sub connector layouts can be changed according to vehicle circuit specifications

