

# Temperature Sensor (for Gas)

Under  
development

Mass production  
available in 2028

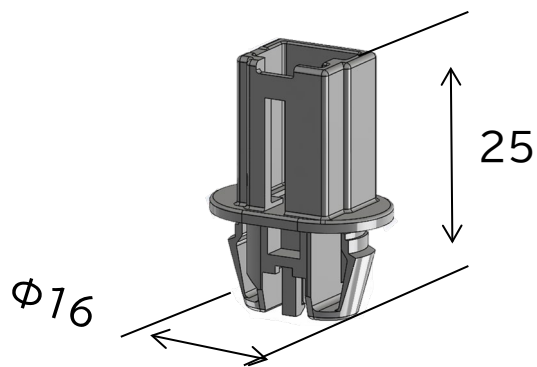
- Temperature sensors using our trusted chip mounting and transfer molding technology
- Reduces variations in temperature measurement by mounting the temperature sensor with high precision

## Background or Challenges

Provides gas temperature sensors for various mounting shapes

## Solutions to Challenges or Features

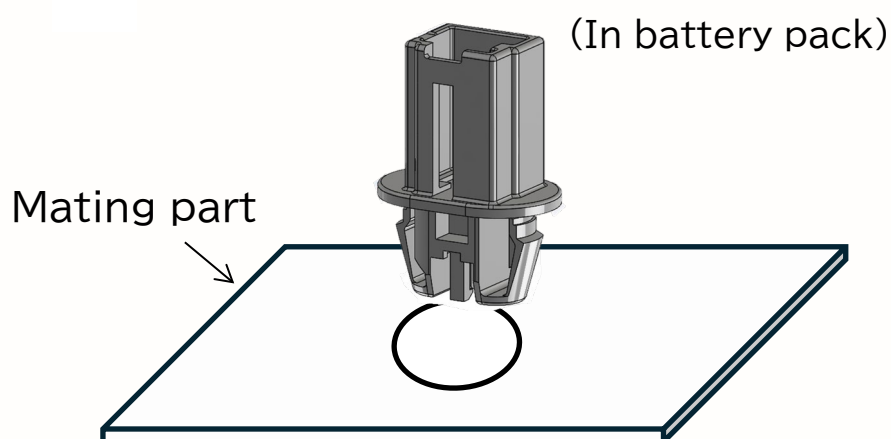
### Non-waterproof type



#### Features

- One-touch installation with snap-fit design
- Uses compact connectors for space-saving installation

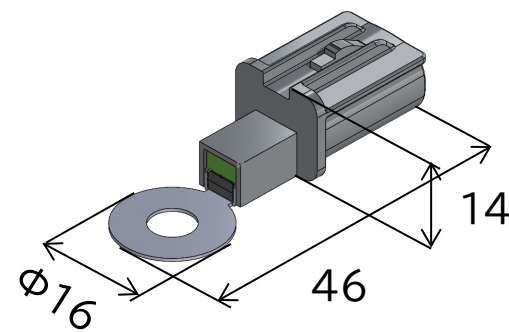
#### Installation image



#### Specifications/Functions

Supply voltage:  $5.0 \pm 0.5V$   
Operating temperature:  $-40^{\circ}C$  to  $80^{\circ}C$   
Resistance value:  $10k\Omega \pm 1\%$  \*  
B constant:  $3,435K \pm 1\%$  \*  
Insulation resistance:  $\geq 100M\Omega$   
(when DC 1,000V is applied)

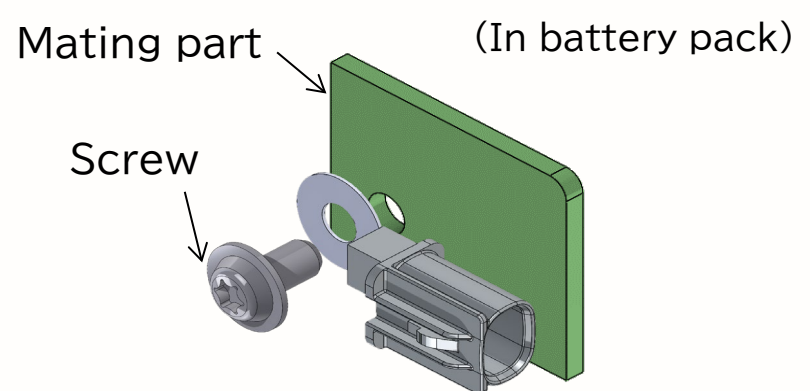
### High heat resistant and waterproof type



#### Features

- Can be installed in areas requiring high heat resistance and waterproof performance
- Easy installation with screws and improved versatility

#### Installation image



#### Specifications/Functions

Supply voltage:  $5.0 \pm 0.5V$   
Operating temperature:  $-40^{\circ}C$  to  $150^{\circ}C$   
Resistance value:  $10k\Omega \pm 1\%$  \*  
B constant:  $3,435K \pm 1\%$  \*  
Insulation resistance:  $\geq 100M\Omega$   
(when DC 1,000V is applied)

\*: Customizable