

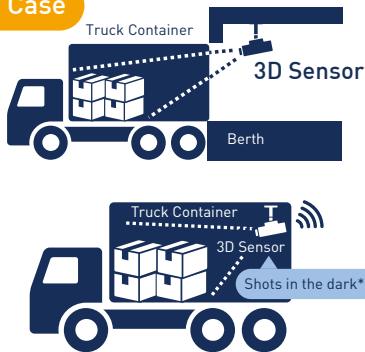
Fixed 3D sensor detects loaded cargo and visualizes loading rates to container volume and empty spaces

- Delivery efficiency is required in response to chronic labor shortages in the logistics industry and the rapid increase in individual deliveries due to demand growth of EC
- Aim to reduce CO₂ emissions by improving loading rates (delivery efficiency) in response to carbon neutrality

- 2 patterns operation, On-board type & Berth type, are available according to customers usage situation
- Customers can select the best 3D sensors from Lidar, ToF and Stereo cameras according to customers usage situation
- It is possible to calculate detailed loading rates for individual operation due to interface with digital tachograph

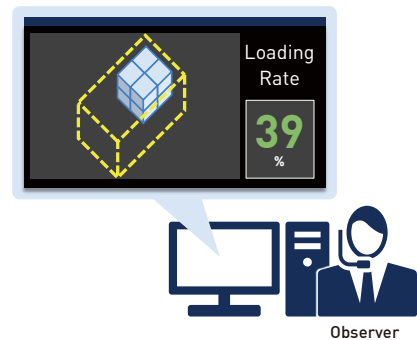
Fixed 3D sensor detects packages loaded in a specific area from captured images and visualizes loading rates to container volume

Target Case

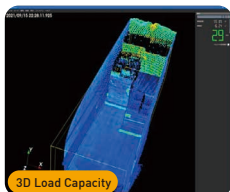


*1. It depends on sensors, please contact us when you select the type.

Detective Case



Setting 3D Sensor in Operating Truck



3D Load Capacity
Processing image of point cloud data & Loading rates



DTG AVI
Drive recorder image for verification

Record#	21000300004546
Date	2021/09/15 (水)
Weather	
Route	DC-Imazato-Kawasaki
Driver	00000291 Taro Yazaki
Vehicle	00000361 XXX Hamamatsu 130 AXX
Model	Truck DTG7
Max. load capacity	13,800kg